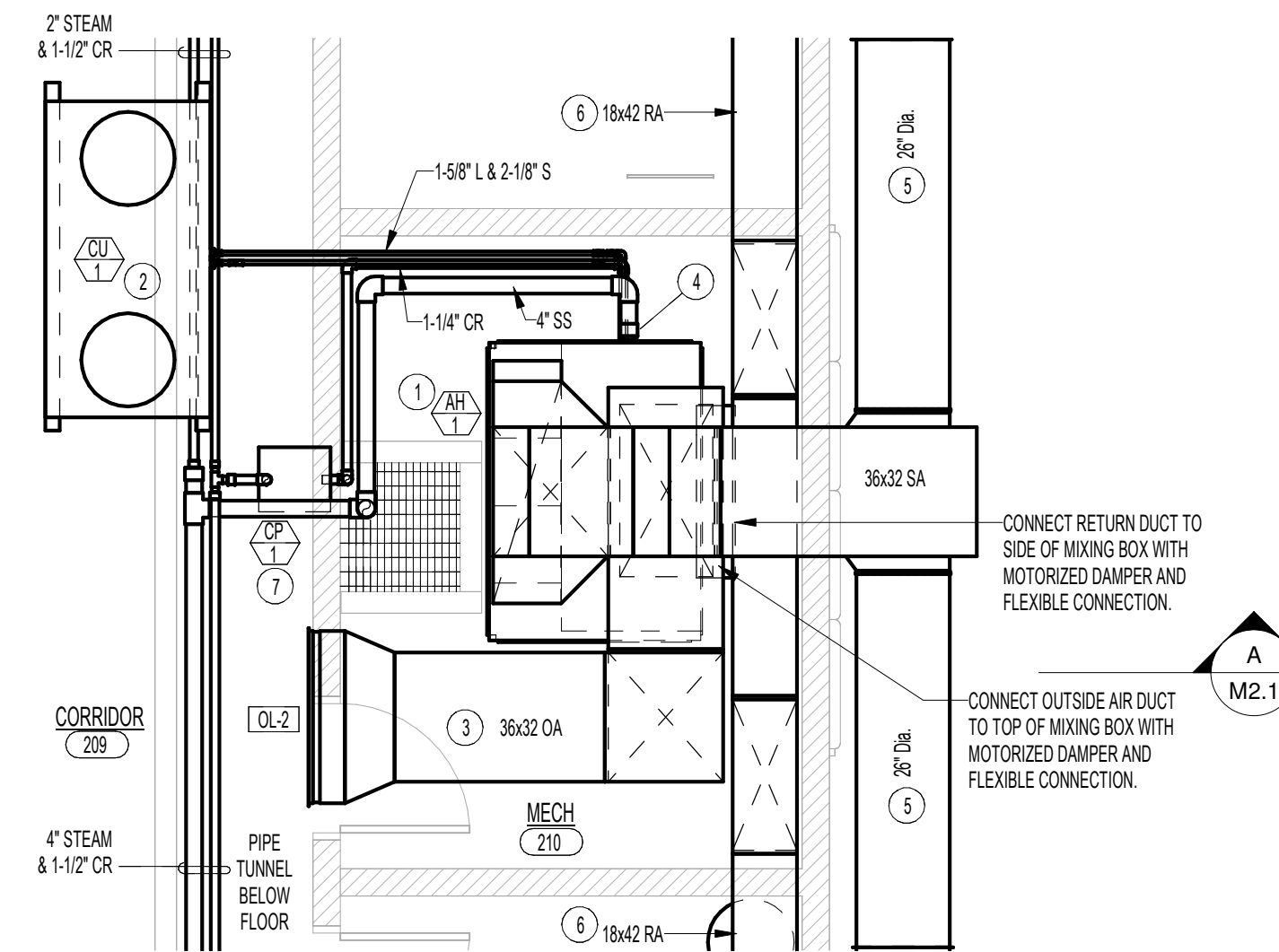
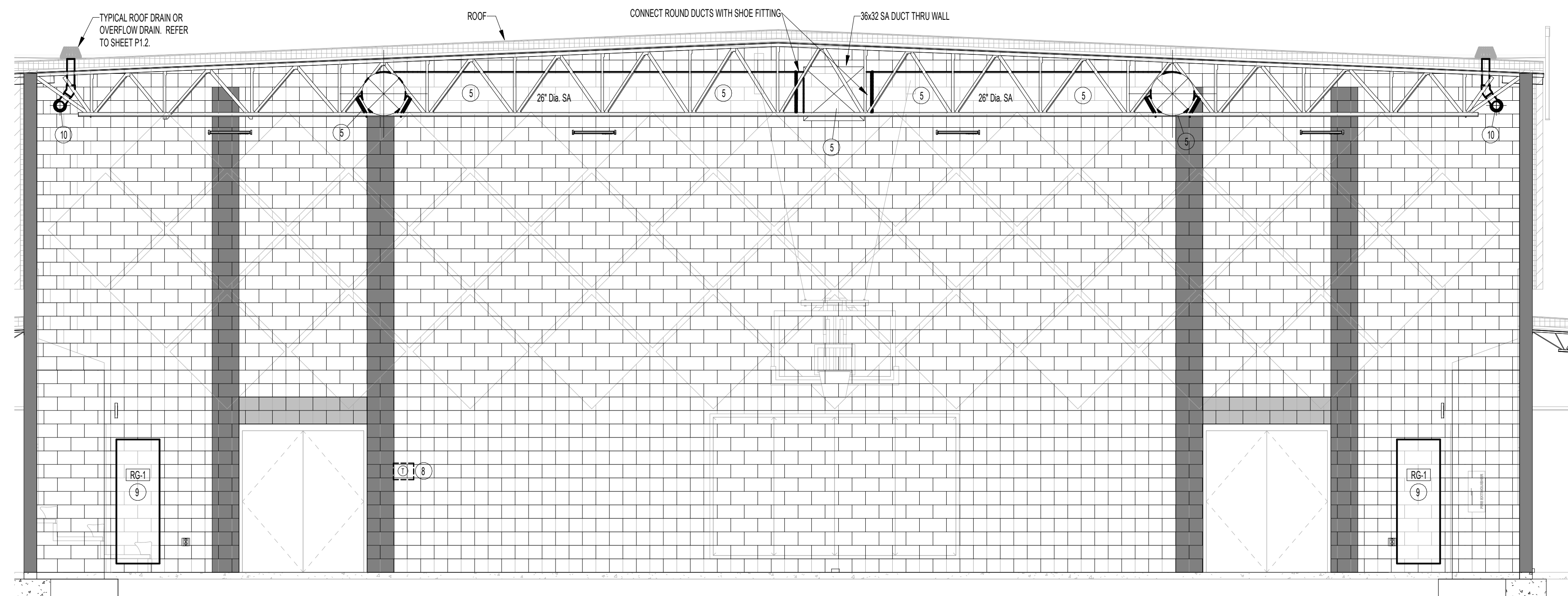


**MECHANICAL SECTION - A**  
SCALE: 1/4" = 1'-0"



**LARGE SCALE MECHANICAL ROOM**  
SCALE: 1/4" = 1'-0"



**MECHANICAL SECTION - B**  
SCALE: 1/4" = 1'-0"

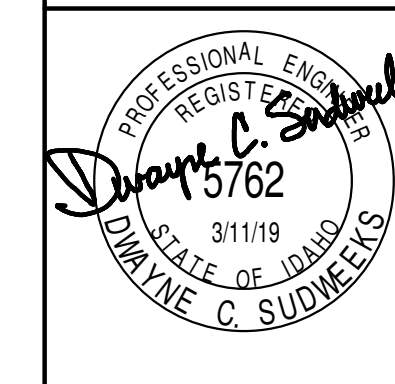
**PLAN NOTES:**

- 1 PROVIDE AND INSTALL NEW VERTICAL AIR HANDLER AS SPECIFIED COMPLETE WITH DX COOLING COIL AND STEAM HEATING COIL. PROVIDE SPRING TYPE VIBRATION ISOLATORS AT EACH CORNER ON UNIT. CONNECT RETURN DUCT, OUTSIDE AIR DUCT, AND SUPPLY AIR DUCT TO AIR HANDLER WITH FLEXIBLE CONNECTIONS. PROVIDE ALL DUCT TRANSITIONS REQUIRED TO CONNECT DUCTWORK.
- 2 MOUNT NEW CONDENSING UNIT ON ROOF FOR GYM AIR HANDLER. RUN REFRIGERANT LINES THRU WALL AND DROP DOWN IN MECHANICAL ROOM TO CONNECT TO AIR HANDLER DX COIL. MOUNT CONDENSING UNIT ON PYRAMID TYPE SUPPORTS. REFER TO DETAIL NMS.1 FOR TYPICAL INSTALLATION AND PIPING CONNECTIONS.
- 3 INSTALL OUTSIDE LOUVER IN WALL ABOVE LOWER ROOF. CONNECT 53x32 OUTSIDE AIR DUCT TO LOUVER AND RUN TO AIR HANDLER MIXING BOX.
- 4 DROP REFRIGERANT LINES DOWN AND CONNECT TO DX COIL IN AIR HANDLER. REFER TO DETAIL NMS.1 FOR TYPICAL PIPING CONNECTIONS AND SUPPORTS. CONNECT 4\"/>

**GENERAL NOTES:**

- A THE CONTRACTOR SHALL CHECK AND VERIFY ALL DIMENSIONS AND CONNECTIONS ON THE JOB SITE. ALL WORK SHALL BE EXECUTED FROM MEASUREMENTS TAKEN AT THE SITE.
- B THE MECHANICAL CONTRACTOR SHALL BE RESPONSIBLE TO INSURE PROPER CODE CLEARANCES FOR ELECTRICAL AND MECHANICAL ACCESS WHEN INSTALLING ANY EQUIPMENT SUPPLIED BY THE MECHANICAL CONTRACTOR.
- C IT IS CRITICAL THAT THIS CONTRACTOR COORDINATE EQUIPMENT LOCATIONS WITH PIPING, DUCTWORK, ELECTRICAL CONDUIT AND BUILDING STRUCTURE TO INSURE CODE COMPLIANCE.
- D CEILING DIFFUSERS ARE SHOWN IN APPROXIMATE LOCATIONS. REFER TO LIGHTING PLANS AND REFLECTED CEILING PLAN FOR EXACT LOCATIONS.
- E DUCT DIMENSIONS CALLED OUT ON DRAWINGS ARE INSIDE FREE AREA DIMENSIONS. ACOUSTICAL DUCT LINER ARE TO BE ADDED TO OVERALL MEASUREMENTS.
- F ALL DUCTWORK AND PIPING WHICH PASSES THRU FIRE RATED WALLS TO BE FIRE STOPPED WITH APPROVED FOAM OR SEALANT. REFER TO SPECIFICATIONS FOR APPROVED MANUFACTURERS.

ORIGINAL DRAWING SIGNED BY: DWAYNE C. SUDWEEKS  
DATE ORIGINAL SIGNED: March 11, 2019 ORIGINAL ON FILE AT:  
ENGINEERED SYSTEMS ASSOCIATES 1355 EAST CENTER,  
POCATELLO, IDAHO 83201



**Engineered Systems Associates**  
1355 EAST CENTER  
POCATELLO, IDAHO 83201  
PHONE: (208) 233-0501  
FAX: (208) 233-0529  
EMAIL: esa@engsystems.com  
ESA JOB NUMBER: 18071

NOT FOR CONSTRUCTION PURPOSES

**nbw architects.p.a.**  
ARCHITECTURE PLANNING / INTERIORS  
SCOTT L NELSON A.I.A. KEVIN R BODILY A.I.A. JAMES HWYATT A.I.A.  
990 JOHN RIBBING PARKWAY P.O. BOX 2212 - IDAHO FALLS, IDAHO 83402-2212  
(208) 208-5222 (208) 522-8785 (208) 522-8785

ADDITION & REMODEL FOR:  
**MIDWAY ELEMENTARY**  
JEFFERSON JOINT SCHOOL DISTRICT NO. 251  
623 N 3500 E, MENAN, IDAHO 83434

PROJECT:  
SHEET TITLE:

REVISIONS

PROJECT NO.  
16071  
DATE:  
FEBRUARY 2019  
DRAWN BY:  
M Jensen  
CHECKED BY:  
D Sudweeks

DRAWING NO.:

**M2.1**